

# POLLUTION INCIDENT RESPONSE MANAGEMENT PLAN - BUNGOWANNAH

Written By: Environmental Officer

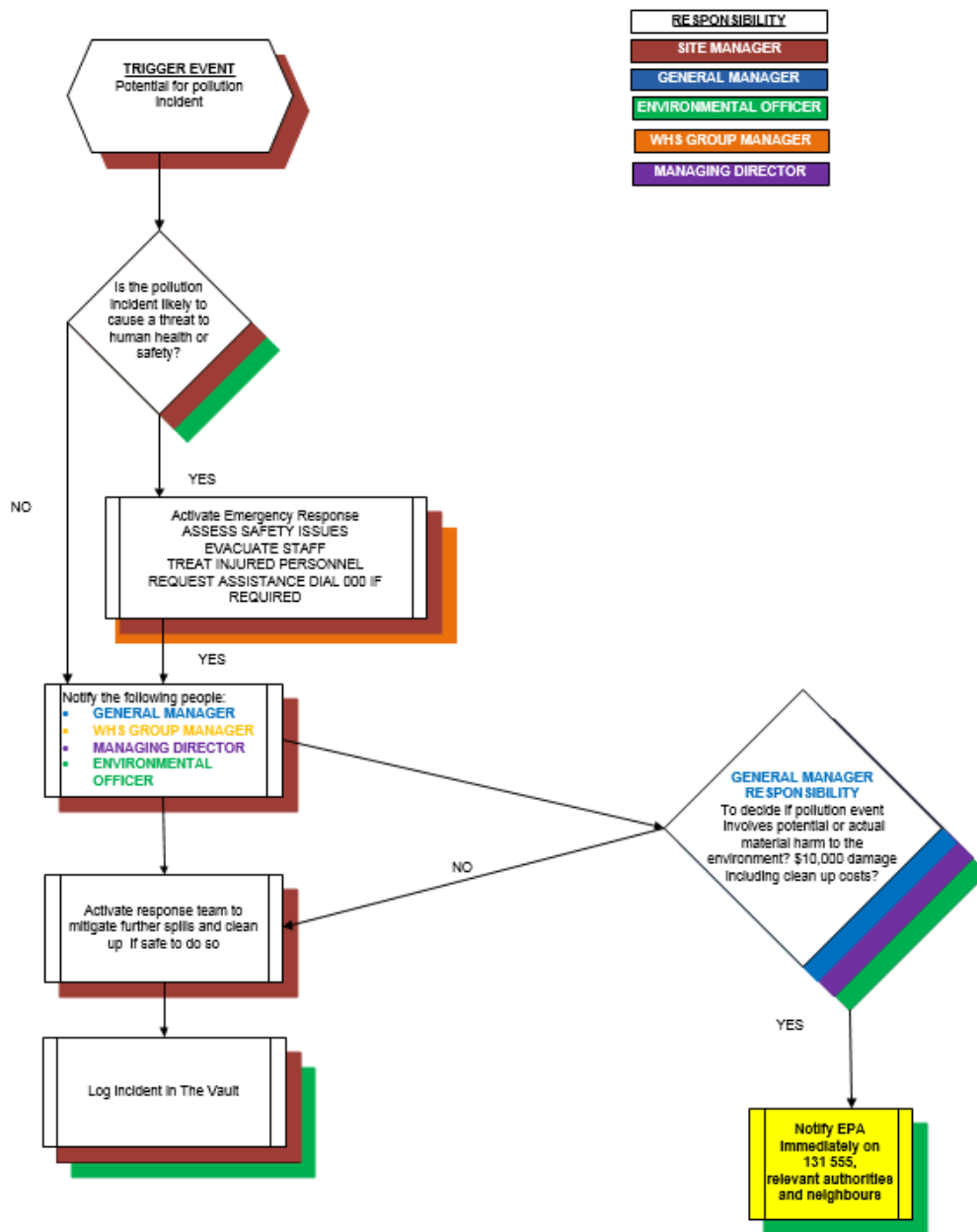
Approved By: Environmental Management team

<b>Rivalea Site:</b>	Bungowannah Piggery
<b>Address:</b>	Riverina Highway Bungowannah NSW 2640
<b>Common Address:</b>	Bungowannah Piggery Riverina Highway Bungowannah NSW 2640
<b>Locations Coordinates:</b>	146°47'40.15"E 36° 1'54.14"S
<b>EPA License Number:</b>	11393



**FIGURE 1: LOCALITY PLAN**

**FIGURE 4: FLOW CHART OF INCIDENT MANAGEMENT**



**EARLY NOTIFICATION OF A POTENTIAL INCIDENT IS VITAL**

**TABLE 2: KEY EXTERNAL AGENCIES CONTACT DETAILS**

Position	Name	Business Hours	Mobile A/H
<b>Environment Protection Authority (EPA)</b>	24 Hour hotline to report pollution incidents	131 555	131 555
<b>Fire and Rescue NSW</b>	Emergencies. (Local Control Centre 24 Hrs. #)	000	000
<b>NSW Ministry of Health</b>	(diverts to Albury Base Hospital)- ask for Public Health Officer on call,	02 6080 8900	02 6080 8900
<b>Safework NSW</b>		13 10 50	13 10 50
<b>Greater Hume Shire Council</b>	Business Hours	1300 653 538	
<b>NSW Police</b>	Emergencies. Albury Station	000 02 6023 9299	000

**TABLE 3: CLOSET LANDMARKS**

Description	Name	Distance (meters)	Direction
Town	Albury	11 500	E
Town	Howlong	16 000	NW
Rural Church	St. Mark's	2 200	W
Major watercourse	Murray River	3 000	S
Watercourse	Long Flat Creek	100	S
Public Road	Riverina Highway	1 200	S

## 1 INTRODUCTION

The Protection of the Environment Legislation Amendment Act (POELA) 2011 requires the Environmental Protection Licence holder to prepare and implement a Pollution Incident Response Management Plan (PIRMP).

## 2 APPLICATION

This plan has been prepared by Rivalea (Australia) Pty Ltd to comply with its obligations under the Protection of the Environment Legislation Amendment (POELA) Act 2011, for Licence number 11393, RIVALEA AUSTRALIA- BUNGOWANNAH PIGGERY.

## 3 IMPLEMENTATION

Implementation of this plan addresses both systematic and incident procedures to be followed in order to prevent or minimise potential pollution incidents that may cause material harm from occurring, limit their impact and respond appropriately when such potential pollution events occur.

In line with section 147 of the Protection of the Environment Act (POEO Act) Material Harm is defined as:

(a) Harm to the environment if:

- (i) It involves actual or potential harm to the health or safety of human beings or to ecosystems that is not trivial, or
- (ii) It results in actual or potential loss or property damage of an amount, or amounts in aggregate, exceeding \$10,000

(b) loss includes the reasonable costs and expenses that would be incurred in taking all reasonable and practicable measures to prevent, mitigate or make good harm to the environment.

The flow chart in Figure 4– Flow Chart of Incident Management details information on the steps involved in responding to a potential pollution incident that may cause material harm to the environment at Bungowannah. The colours on each step of the chart indicate key personnel responsible for that step. Contact details for each key personnel are listed below the flowchart.

Any personnel undertaking an activity on site who become aware of a potential pollution incident is to immediately notify the Site Manager.

A General Manager with advice from the Environment Manager or Officer will decide if the incident is to be notified to EPA. Notification will be activated by the most Senior Manager aware of the event. The EPA are to be notified via their hotline (number 131 555). **THE FINE FOR NOT REPORTING A POLLUTION INCIDENT IMMEDIATELY IS \$2 MILLION.**

#### **4 COMMUNICATION OF A POTENTIAL POLLUTION EVENT**

Rivalea will also utilise electronic means of communication (text message, e-mail) where neighbours have given contact details to Rivalea. Rivalea will regularly communicate with neighbours and keep contact details on file where permission is given.

Advising residents or occupants of neighbouring properties will be accomplished by door knocking at the direction of the emergency services or appropriate Rivalea Manager.

#### **5 ADMINISTRATION**

Administration for the implementation, maintenance, training of personnel and regular review is the responsibility of the Environmental management team.

#### **6 ENQUIRIES REGARDING PIRMP**

All enquiries should be directed to the Rivalea Environmental team on (02) 6033 8333.

#### **7 EMERGENCY RESPONSE PLAN**

A copy of the Emergency Response Plan (ERP) for Bungowannah can be found on Rivalea's SharePoint site. This plan is to be implemented in line with the information covered as part of the Bungowannah ERP.

#### **8 INCIDENT RECORDING AND REVIEW**

Rivalea maintains an incident management system.